

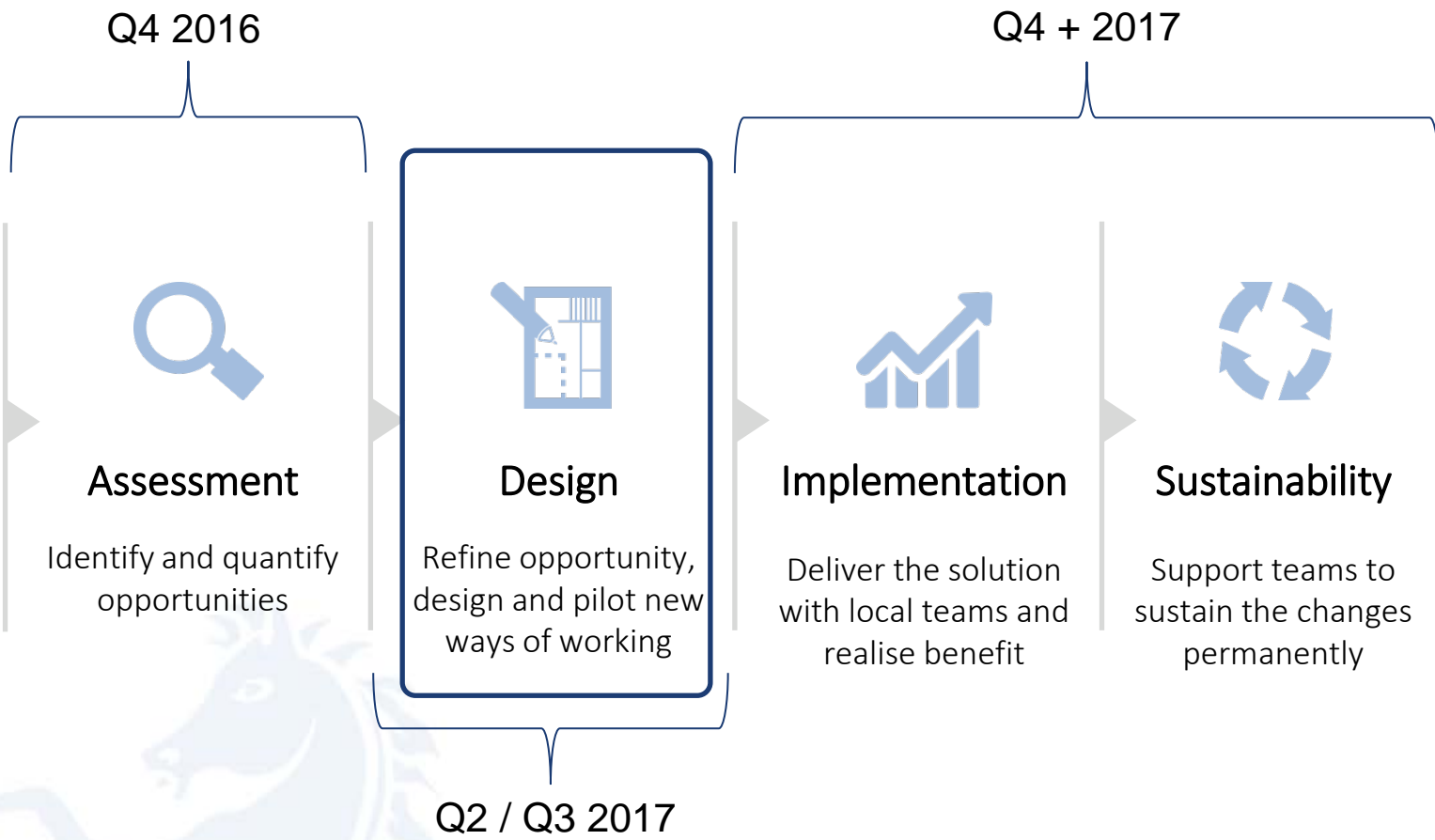


South Kent Coast Health & Wellbeing Board

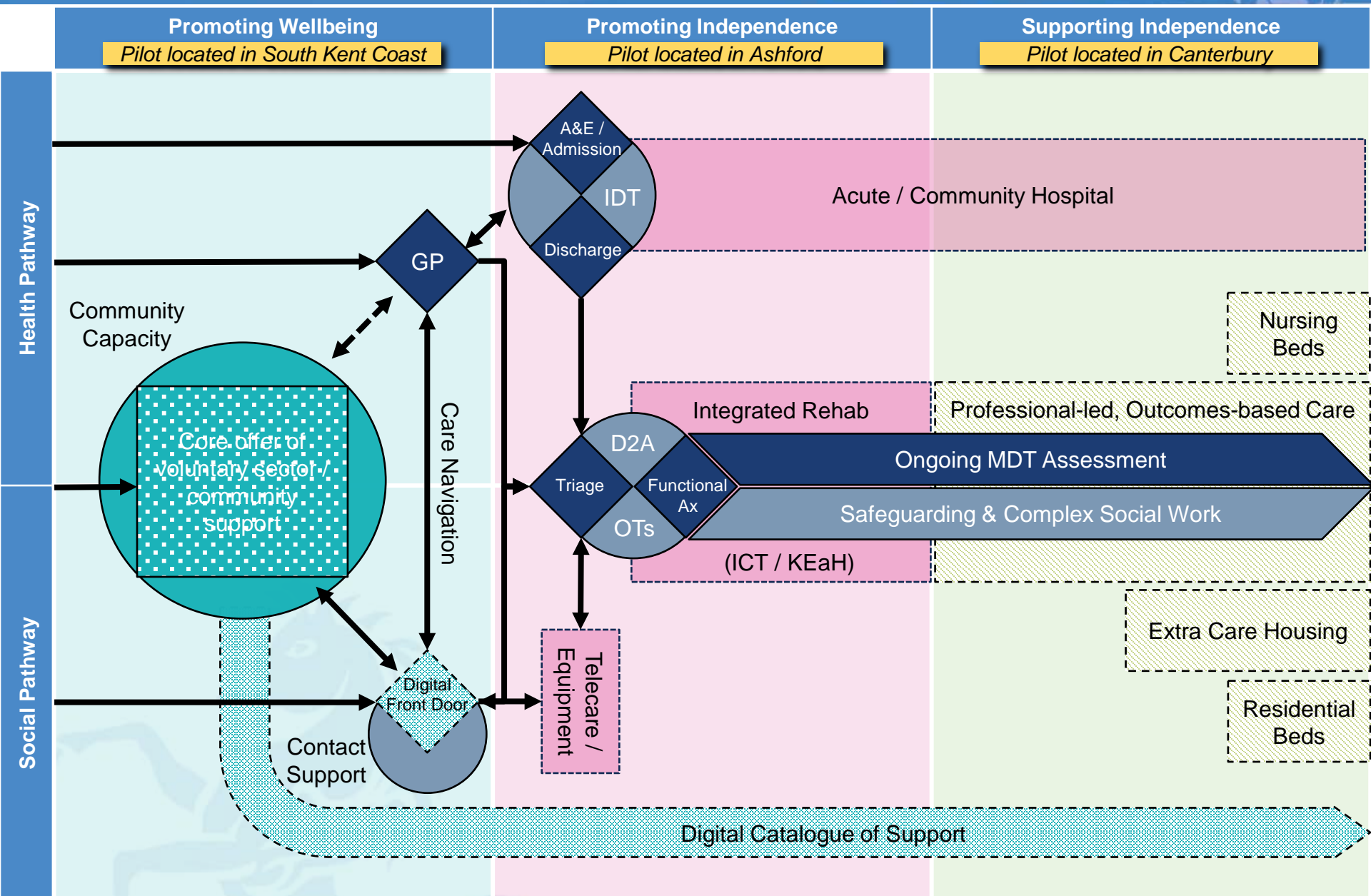
16th May 2017



KCC is in it's third phase of transformation



We are designing a new operating model to deliver our vision



Making a significant contribution to Local Care



Supporting people to be healthy and independent

1 Care and support planning with care navigation and case management

Pilot
Supporting Independence: Professional-led, outcomes-based homecare

Coverage



2 Self-care and management

Promoting Wellbeing: Core offer, digital offer / self assessment



3 Healthy living environment

Promoting Wellbeing: Core offer



Coordinated care for people who need it

4 Integrated health and social care into or coordinated close to the home

Supporting Independence: Professional-led, Outcomes-Based Homecare



5 Single point of access

Promoting Wellbeing: Front door / triage



6 Rapid Response

Promoting Independence: Discharge to assess / functional assessment



7 Discharge planning and reablement

Promoting Independence: Integrated rehab



Supporting services

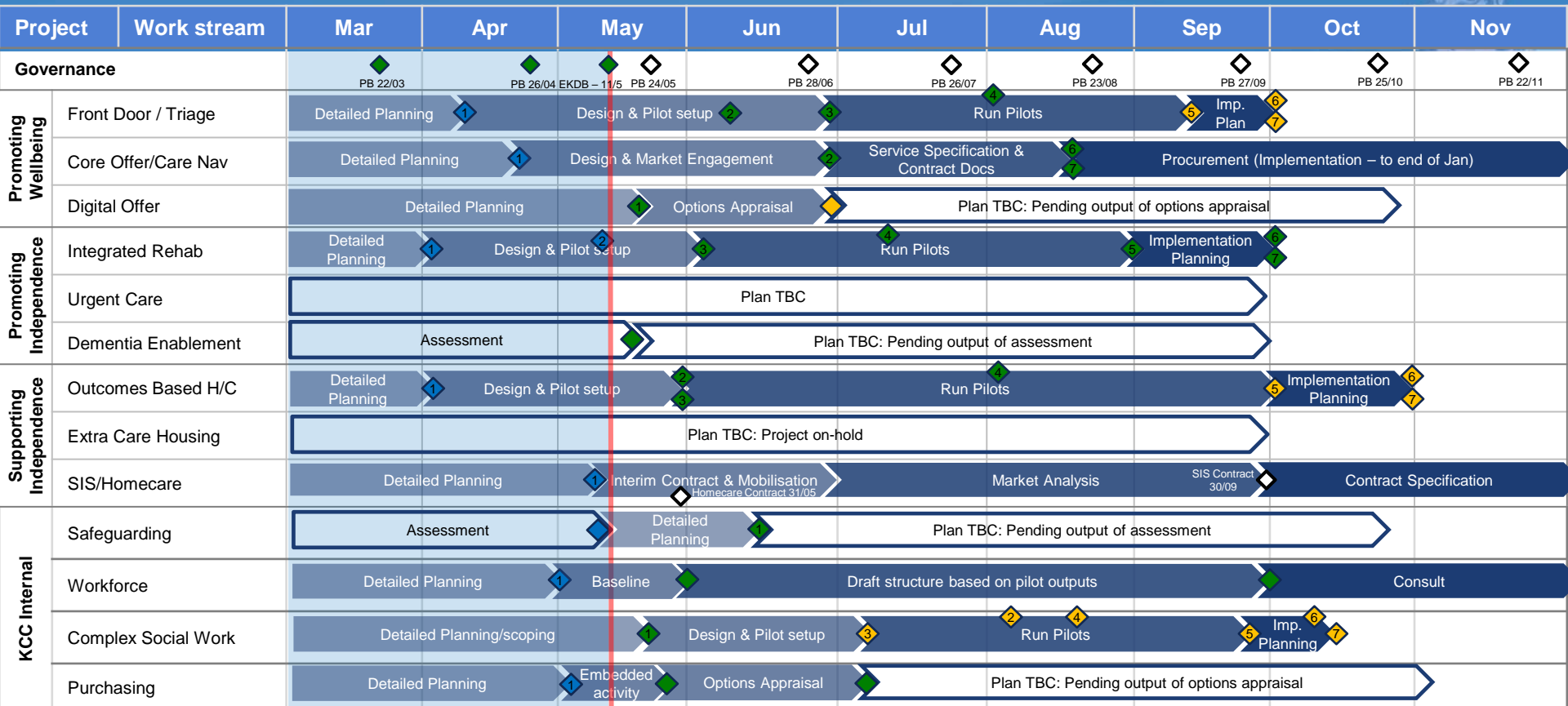
8 Access to expert opinion and timely access to diagnostics

N/A



Programme Status

◆ Fixed Date
 ◆ On Track Milestone
 ◆ At Risk Milestone
 ◆ Slipped Milestone
 ◆ Completed Milestone



| Type | Description | LH | Imp. | Impact Description | Action Plan |
|------|---|----|------|--|--|
| Risk | Successful completion of pilots requires significant commitment of operational resources from all partners. This may not be secured due to operational pressures | 3 | 5 | The OBHC and Integrated Rehab pilots will be most significantly impacted – the full future model will not be able to be tested, lowering confidence and quality of final solution. | <ol style="list-style-type: none"> Identify and raise resource requirements early to give maximum time to agree, backfill and mobilise Ensure appropriate governance to enable escalation of requirements |
| Risk | Developing a model to be implemented across the county requires awareness and strategic engagement from all partners. This may not be achieved due to the number of partners involved and the pace of progress. | 2 | 5 | Design and implementation will be delayed or the models compromised without the right input from all partners. | <ol style="list-style-type: none"> Ensure and make use of appropriate governance to communicate details of the model and progress in design Develop a communication and engagement plan for areas not involved in design |

Design Highlights

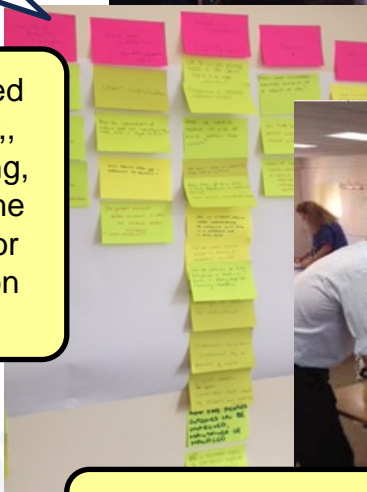


Promoting Wellbeing

"More days like this please! It has increased my understanding of what the voluntary sector can do by so much!"



Design workshops have covered the ideal service user pathway, questioning and decision making, the capacity and capability of the voluntary and community sector and are now moving to focus on setting up the Pilot.



Design workshops have covered referral and triage, outcome setting, care and support planning, the outcomes review process and are now moving to focus on setting up the Pilot.

Promoting Independence

[From ICT] "I've never spoken to KEaH about a case before – but the workshops led me to start discussing how we can work together with our existing clients"

Design workshops have covered service scope, functional assessment, referral routes, the model of care, KPIs and are now moving to focus on setting up the Pilot.

"The workshops have good representation, which is invaluable for the wide ranging discussion/planning we are doing"

Supporting Independence

